

New and interesting Portuguese Lepidoptera records from 2016 (Insecta: Lepidoptera)

**M. F. V. Corley, J. Rosete, A. R. Gonçalves, V. Mata, J. Nunes
& P. Pires**

Abstract

32 species are added to the Portuguese Lepidoptera fauna, mainly as a result of fieldwork undertaken by the authors and others in 2016. In addition, second and third records for the country, new province records and new food-plant data for a number of species are included. A summary of recent papers affecting the Portuguese fauna is included.

KEY WORDS: Insecta, Lepidoptera, distribution, Portugal.

Novos e interessantes registos portugueses de Lepidoptera em 2016 (Insecta: Lepidoptera)

Resumo

Como resultado do trabalho de campo desenvolvido pelos autores e outros, principalmente no ano de 2016, são adicionadas 32 espécies de Lepidoptera à fauna de Portugal. Adicionalmente, são apresentados segundos e terceiros registos de espécies previamente conhecidas, bem como novas plantas alimentícias para algumas espécies. Finalmente, é apresentado um sumário dos mais recentes trabalhos relevantes para a fauna portuguesa.

PALAVRAS CHAVE: Insecta, Lepidoptera, distribuição, Portugal.

Nuevas e interesantes citas portuguesas de Lepidoptera en 2016 (Insecta: Lepidoptera)

Resumen

Como resultado del trabajo de campo efectuado por los autores y otros, principalmente durante el año de 2016, se añaden 32 especies de Lepidoptera a la fauna de Portugal. Además, se añaden segundos y terceros registros de especies ya conocidas y también nuevas plantas nutricias para algunas otras especies. Finalmente, se presenta un resumen de los trabajos más recientes que son relevantes para la fauna portuguesa.

PALABRAS CLAVE: Insecta, Lepidoptera, distribución, Portugal.

Introduction

This paper is the eleventh in the series of annual summaries of new knowledge of Portuguese Lepidoptera. It gives records of species of Lepidoptera added to the Portuguese fauna in 2016, together with new province records not included in the checklist (CORLEY, 2015). Additional data includes

new data on larval food-plants within the country and second and third records of species for the country, which are only indicated when they are not in new provinces. Papers published in 2016 that relate to the Portuguese Lepidoptera fauna are listed and briefly summarised. Finally, an Appendix lists the new species for Portugal separately, with numbers indicating their correct position in the checklist; new genera for Portugal have author and year of publication given.

32 species new for Portugal are listed below, of which seven are new for the Iberian Peninsula. A few of the new species listed here have been previously listed for Portugal, but the records were rejected in CORLEY (2015), as being erroneous or unsubstantiated.

In CORLEY *et al.* (2016) the number of Lepidoptera species recognised from Portugal was 2626. With the current paper and other papers mentioned herein, this total has risen to 2657.

Material and Methods

Most species were captured at mercury vapour light over or beside a white sheet, but a few were taken at Heath-type traps with 8 w black actinic tubes. For specimens not taken at light, the means of capture is given. Specimens are retained in the collections of the original recorders, unless otherwise stated. However, a few records are based only on photographic evidence.

The order and nomenclature of families and species has been revised in accordance with the new Portuguese list (CORLEY, 2015). The nomenclature of plant names follows CASTROVIEJO (1986-2015) where possible and otherwise follows TUTIN *et al.* (1964-1980).

The entry for species new for Portugal concludes with a summary of the known European distribution, and available information on the larval food-plant, given in square brackets if the information comes from outside Portugal.

Localities with UTM squares and altitude: (District in brackets)

The map below shows the 10x10 km UTM grid squares from which records cited in this paper were made.

Localities

Abiúl (Pombal)	NE3913	180 m
Alambre (Setúbal)	MC9760	115 m
Aljezur, 3 km S of	NB1827	25 m
Alto de Penaboste, Serra da Nogueira (Vinhais)	PG7720	1150 m
Amendoeira da Serra (Mértola)	PB1583	155 m
Ansião, 2 km E. of,	NE5019	250 m
Árvore (Vila do Conde)	NF2377	40 m
Balsamão (Macedo de Cavaleiros)	PF7993	450 m
Barragem de Azibo (Macedo de Cavaleiros)	PG7503	610 m
Bobal (Mondim de Basto)	NF9784	850 m
Boliqueime (Loulé)	NB7510	70 m
Buracas de Casmilo (Condeixa-a-Nova)	NE4333	300 m
Carrapateira (Vila do Bispo)	NB0806	25 m
Carrizado, 1 km S.W. of, (Bragança)	PG7425	890 m
Carvalheira, Serra da Estrela (Manteigas)	PE2274	1050 m
Casais do Porto, Louriçal (Pombal)	NE2229	20 m
Castelo de Juromelo, Rabaçal (Penela)	NE4828	250 m
Castro Laboreiro (Melgaço)	NG6954	970 m
Chão de Couce (Ansião)	NE5218	300 m
Cidadelhe (Vinhais)	PG6635	1020 m

Condeixa-a-Nova	NE4438	100 m
Corredoura, Serra da Pevide (Porto de Mós)	ND1383	200 m
Couce (Valongo)	NF4356	50 m
Covelas, Sambade, Serra de Bornes (Alfândega da Fé)	PF6687	985 m
Dine (Vinhais)	PG7141	740 m
Esculca, Beça, Serra do Barroso (Boticas)	PG0815	790 m
Estevais (Torre de Moncorvo)	PF6267	450 m
Faia Brava reserve, Algodres (Figueira de Castelo Rodrigo)	PF6135	450 m
Fonte da Cabra, Serro Ventoso (Porto de Mós)	ND1479	350 m
França, 5 km west of, (Bragança)	PG8241	750 m
Furadouro (Condeixa-a-Nova)	NE4335	250 m
Gambelas (Faro)	NB9100	25 m
Guadramil (Bragança)	QG0143	700 m
Ilha da Culatra (Faro)	PA0395	4 m
Ilha da Murraceira (Figueira da Foz)	NE1542	3 m
Lagares (Penafiel)	NF5452	230 m
Lagoa (Mira)	NE2077	12 m
Lagoa da Ervideira, Pedrogão (Leiria)	NE0820	50 m
Lama Grande, Serra de Montesinho (Bragança)	PG8346	1390 m
Louriçal (Pombal)	NE2228	40 m
Lousada	NF6070	270 m
Madriz (Soure)	NE3141	8 m
Malhada Tramazeira, Vale de Rossim (Seia)	PE1972	1420 m
Mata do Urso (Pombal)	NE0924	25 m
Mindelo (Vila do Conde)	NF2274	5 m
Moura da Serra, Mata da Margaraça (Arganil)	NE9252	500 m
Olhos de Água de Alviela, Amiais de Baixo (Santarém)	ND2466	120 m
Pampilhosa de Botão (Mealhada)	NE4964	90 m
Parque Biológico de Gaia (Vila Nova de Gaia)	NF3650	110 m
Penelas (Vila Real)	PF0566	280 m
Penhas da Saúde (Covilhã)	PE2323	1515m
Poço (Condeixa-a-Nova)	NE4406	220 m
Podre, Castro Laboreiro (Melgaço)	NG6850	800 m
Pontão dos Alambiques (Alfândega da Fé)	PF7178	500 m
Ponte da Carba, Celas (Vinhais)	PG7222	710 m
Ponte da Barca	NG4927	80 m
Ponte de Jugais, Lapa dos Dinheiros (Seia)	PE1071	570 m
Porto	NF3355	80 m
Quinta da Estrelinha, Rubiães (Paredes de Coura)	NG3138	255 m
Quinta do Canal, Bizorreiro (Figueira da Foz)	NE1639	3 m
Quinta do Zacarias (Alfândega da Fé)	PF7479	250 m
Ribeira de Cércio (Miranda do Douro)	QF2494	685 m
Rio Maças, 3 km W of Vimioso	QG0307	405 m
Salgueiros (Vinhais)	PG6341	930 m
Santuário de Santo Ambrósio, Vale do Porco (Macedo de Cavaleiros)	PF7799	580 m
São Romão (São Bras de Alportel)	NB9412	200 m
São Vicente de Penso (Braga)	NF4693	210 m
Sapais de Castro Marim (Castro Marim)	PB3820	4 m
Sargaçal (Lagos)	NB2711	30 m
Serra de Janeanes (Condeixa-a-Nova)	NE4434	350 m
Terras do Risco, Serra da Arrábida (Sesimbra)	MC9757	205 m

Vale dos Veados, Serra da Arrábida (Setúbal)	MC9959	150 m
Valongo	NF4159	200 m
Verride (Montemor-o-Velho)	NE2441	100 m

Recorders

Rui Andrade	Ana Rita Gonçalves	Tatiana Moreira
Miguel Berkemeier	Valter Jacinto	João Nunes
Tineke van Boven	Edmundo Jesus	Pedro Pires
João Pedro Cardoso	José Lemos	Fernando Romão
Ricardo Cardoso	Tiago Magalhães	Jorge Rosete
Martin Corley	Eduardo Marabuto	Carlos Silva
Mike Dale	Ernestino Maravalhas	Ana Valadares
Isaias Ferreira	Cristiana Marques	
Pedro Gomes	Vanessa Mata	



Abbreviations and symbols

coll.	collection
comm.	communicated by
conf.	confirmed by
det.	determined by
*	New for Portugal, i.e. not listed for Portugal in CORLEY (2015).
**	New for the Iberian Peninsula.

Provinces:

ALG	Algarve	DL	Douro Litoral
BA	Beira Alta	E	Estremadura
BAL	Baixo Alentejo	M	Minho
BB	Beira Baixa	R	Ribatejo
BL	Beira Litoral	TM	Trás-os-Montes

List of families and species

NEPTICULIDAE

Stigmella speciosa (Frey, 1858)

E: Vale dos Veados, leafmine on *Acer monspessulanum*, 20-X-2016, Gonçalves, det. Corley.

Stigmella ilicifolia (Mendes, 1918)

TM: Quinta do Zacarias, 28-VIII-2016, Corley and Gonçalves.

** *Bohemannia quadrimaculella* (Boheman, 1853)

TM: Ponte da Carba, 23-VII-2016, Pires, det. Corley. North-west Europe to Sweden, Czech Republic, Italy and Corsica, Romania. [*Alnus glutinosa*].

Ectoedemia caradjai (Groschke, 1944)

BL: Ansião, 18-VII-2016, Rosete, det. Corley.

ADELIDAE

Nemophora barbatellus (Zeller, 1847)

BL: Ansião, on *Centaurea pullata* flowers, 28-V-2016, Corley and Rosete.

Adela collicolella Walsingham, 1904

E: Alambre, seen by day, 19-III-2016, Nunes and Berkemeier.

TISCHERIIDAE

Tischeria decidua Wocke, 1876

BL: Condeixa-a-Nova, 17-IX-2015, Rosete, Jesus and Ferreira, det. Corley.

MILLIERIDAE

Millieria dolosalis (Heydenreich, 1851)

TM: Santuário de Santo Ambrósio, 23-IV-2016, Nunes, Silva and Jesus, det. Corley.

HELIOZELIDAE

Heliozela sericiella (Haworth, 1818)

BL: Ansião, 23-IV-2016, Rosete, det. Corley.

TINEIDAE

Infurcitinea corleyi Gaedike, 2011

DL: Lagares, 22-VII-2016, Nunes and Silva, det. Corley.

Infurcitinea italica (Amsel, 1954)

BL: Ansião, 18-VII-2016, Rosete, det. Corley.

Novotinea muricolella (Fuchs, 1879)

BL: Buracas de Casmilo, 4-IX-2015, Rosete, det. Corley.

* *Gaedikeia kokkariensis* Sutter, 1998

TM: Estevais, at black Heath trap, 1-VI-2016, Corley and Mata. Greece, Spain. Larva unknown.

Reisserita flavofimbriella (Chrétien, 1925)

DL: Valongo, 7-VII-2016, Nunes, det. Corley.

* *Tinea columbariella* Wocke, 1877

BL: Casais do Porto, 6-IX-2016, Rosete, det. Corley. Most of Europe, absent from a few countries and nearly all Mediterranean islands. [Larva found on detritus in birds' nests, dovecotes etc.].

Tinea trinotella Thunberg, 1794

TM: Cidadelhe, 6-VI-2016, Corley.

Crassicornella agenjoi Petersen, 1957

DL: Couce, 9-VII-2016, Nunes and Silva.

Opogona omoscopa (Meyrick, 1893)

DL: Porto, larva on bark and dead wood of *Bougainvillea*, VIII-2016, Nunes.

BUCCULATRICIDAE

* *Bucculatrix diffusella* Menhofer, 1943

DL: Mindelo, 5-VII-2016, Nunes, det. Tokár (fig. 1). Spain, Italy, Croatia, Bulgaria. [*Artemisia maritima*].

Bucculatrix frangutella (Goeze, 1783)

BA: Ponte de Jugais, 26-VIII-2016, Corley and Gonçalves.

GRACILLARIIDAE

Caloptilia elongella (Linnaeus, 1761)

TM: Bobal, reared from larva on *Alnus glutinosa*, 28-X-2016, Nunes.

Caloptilia conimbricensis Corley, 2014

TM: Rio Maças, 30-VIII-2016, Corley.

** *Aspilapteryx inquinata* Triberti, 1985

ALG: Carrapateira, 18-IV-1993, Corley. France, Italy, Greece. [*Teucrium polium*].

Spulerina simploniella (Fischer von Röslerstamm, 1840)

DL: Lagares, 22-VII-2016, Nunes and Silva.

Parornix tenella (Rebel, 1919)

E: Fonte da Cabra, 18-IX-2015, Rosete, det. Corley.

Phyllonorycter millierella (Staudinger, 1871)

TM: Penelas, reared from leafmine on *Celtis australis*, 8-X-2016, Nunes (fig. 2).

YPONOMEUTIDAE

Zelleria hepariella Stainton, 1849

BL: Ansião, larvae on *Phillyrea latifolia*, 28-V-2016, Corley.

Paradoxus osyridellus Millière, 1869

BL: Chão de Couce, 3-IX-2016, Corley and Rosete; TM: Quinta do Zacarias, 28-VIII-2016, Corley.

Parahyponomeuta egregiella (Duponchel, 1839)

TM: Lama Grande, larvae on *Erica umbellata*, 5-VI-2016, Corley.

Paraswammerdamia albicapitella (Scharfenberg, 1805)

E: Fonte da Cabra, 18-IX-2015, Rosete.

Ocnerostoma friesei Svensson, 1966

BB: Penhas da Saúde, 25-VIII-2016, Corley and Gonçalves.

GLYPHIPTERIGIDAE

Acrolepia autumnitella Curtis, 1838

TM: Penelas, leafminer on *Solanum dulcamara*, 8-X-2016, Nunes.

ARGYRESTHIIDAE

Argyresthia goedartella (Linnaeus, 1758)

BB: Penhas da Saúde, 25-VIII-2016, Corley and Gonçalves.

* *Argyresthia bonnetella* (Linnaeus, 1758)

TM: Alto de Penaboste, 14-VIII-2016, Marabuto, Gonçalves, Nunes, Silva and Moreira (fig. 3); França, 31-VIII-2016, Corley and Gonçalves. Europe, but absent from Greece and Mediterranean islands. [Larva in shoots of *Crataegus*].

LYONETIIDAE

Phyllobrostis daphneella Staudinger, 1859

BL: Buracas de Casmilo, 4-IX-2015, Rosete, det. Corley.

PRAYDIDAE

Distagmos ledereri Herrich-Schäffer, 1854

DL: Parque Biológico de Gaia, 12-III-2016, Nunes and Silva.

AUTOSTICHIDAE

Arragonia punctivittella (Zerny, 1927)

Second record. BAL: Amendoeira da Serra, 10-IX-2016, Marabuto, Nunes, Silva and Jesus.

Holcopogon bubulcellus (Staudinger, 1859)

BAL: Amendoeira da Serra, 10-IX-2016, Marabuto, Nunes, Silva and Jesus.

Symmoca signatella Herrich-Schäffer, 1854

BAL: Amendoeira da Serra, 10-IX-2016, Marabuto, Nunes, Silva and Jesus.

Symmoca tofosella Rebel, 1893

BAL: Amendoeira da Serra, 10-IX-2016, Marabuto, Nunes, Silva and Jesus, det. Corley.

Symmoca revoluta Gozmány, 1985

BAL: Amendoeira da Serra, 10-IX-2016, Marabuto, Nunes, Silva and Jesus.

Symmoca alhambrella Walsingham, 1911

DL: Penafiel, 22-VII-2016, Nunes and Silva, det. Corley.

Dysspastus fallax (Gozmány, 1961)

DL: Penafiel, 22-VII-2016, Nunes and Silva, det. Corley.

LECITHOCERIDAE

Hieroxestis briantiella (Turati, 1879)

TM: Quinta do Zacarias, 28-VII-2016, Corley.

OECOPHORIDAE

Esperia sulphurella (Fabricius, 1775)

M: Castro Laboreiro, on window, 30-V-2016, Corley.

DEPRESSARIIDAE

Agonopterix liturosa (Haworth, 1811)

TM: França, larva on *Hypericum perforatum*, 5-VI-2016, Corley.

Agonopterix purpurea (Haworth, 1811)

BL: Buracas de Casmilo, 15-X-2015, Rosete.

Agonopterix curvipunctosa (Haworth, 1811)

BL: Castelo de Juromelo, 22-XII-2016, Nunes, Silva, Jesus and Pires.

Agonopterix umbellana (Fabricius, 1794)

BB: Penhas da Saúde, 25-VIII-2016, Corley, Gonçalves and Ferreira.

Agonopterix pallorella (Zeller, 1839)

M: Podre, 30-V-2016, Corley.

Agonopterix subpropinquella (Stainton, 1849)

ALG: São Romão, larvae on *Centaurea pullata*, 22-III-2016, Corley.

Depressaria adustatella Turati, 1927

TM: Estevais, at black Heath trap, 1-VI-2016, Corley and Mata.

Depressaria velox Staudinger, 1859

BL: Lagoa da Ervideira, larvae on *Seseli tortuosum*, 27-V-2016, Rosete and Corley.

Depressaria veneficella Zeller, 1847

TM: Pontão dos Alambiques, larvae on *Thapsia villosa* flowers, 1-VI-2016, Corley; Ribeira de Cércio, larvae on *Thapsia villosa* flowers, 4-VI-2016, Corley.

COSMOPTERIGIDAE

* *Cosmopterix zieglereella* (Hübner, 1810)

TM: Penelas, larvae in leafmines on *Humulus lupulus*, 8-X-2016, Nunes. Middle latitudes of Europe, north to Sweden and Latvia, south to Spain, Italy and Bulgaria, absent from Mediterranean islands.

Coccidiphila gerasimovi Danilevsky, 1950

BA: Ponte de Jugais, 26-VIII-2016, Corley; TM: Rio Maças, 30-VIII-2016, Corley.

Vulcaniella grabowiella (Staudinger, 1859)

BL: Ansião, 23-VII-2016, Rosete, det. Corley.

GELECHIIDAE

Syncopacma larseniella Gozmány, 1957

DL: Valongo, 7-VII-2016, Nunes, det. Corley.

* *Syncopacma albipalpella* (Herrich-Schäffer, 1854)

BL: Ansião, 5-VII-2016, Rosete, det. Corley. Western Europe east to Austria, absent from Ireland and Mediterranean islands. [*Genista anglica*].

Anacampsis timidella (Wocke, 1887)

TM: Dine, 2-IX-2016, Corley and Gonçalves.

Pseudosphronia exustellus (Zeller, 1847)

BAL: Amendoeira da Serra, 10-IX-2016, Marabuto, Nunes, Silva and Jesus, det. Corley.

* *Dichomeris marginella* (Fabricius, 1781)

TM: Estevais, 1-VI-2016, Corley. Most of Europe, Corsica, absent from a few countries and from other Mediterranean islands. [*Juniperus* spp.].

Pectinophora gossypiella (Saunders, 1844)

Second record. ALG: Boliqeime, 3-X-2009, Dale.

Bryotropha terrella (Denis & Schiffermüller, 1775)

BL: Chão de Couce, 3-IX-2016, Corley and Rosete.

Bryotropha figulella (Staudinger, 1859)

E: Praia do Samouco, 1-IV-2016, Rosete, det. Corley.

Bryotropha dryadella (Zeller, 1850)

E: Fonte da Cabra, 18-IX-2015, Rosete, det. Corley; BL: Buracas de Casmilo, 4-IX-2015, Rosete, det. Corley.

Aristotelia ericinella (Zeller, 1839)

BB: Penhas da Saúde, 25-VIII-2016, Corley, Gonçalves and Ferreira.

Isophrictis constantina (Baker, 1888)

Second record. TM: Quinta do Zacarias, 2-VI-2016, Corley.

* *Metzneria littorella* (Douglas, 1850)

ALG: Boliqeime, 28-IV-2011, Dale (fig. 4). England, France, Spain, Italy, Corsica, Sardinia, Sicily, Cyprus, south Russia. [On seeds of *Plantago coronopus*].

** *Psamathocrita dalmatinella* Huemer & Tokár, 2000

ALG: Aljezur, netted at dusk, 21-V-2002, Corley; BL: Poço, 7-VI-2016, Rosete, det. Corley. Croatia. [*Achillea holosericea*].

Gelechia senticetella (Staudinger, 1859)

E: Terras do Risco, from larva on *Juniperus phoenicea*, 25-VIII-2016, Nunes, det. Corley.

Psoricoptera gibbosella (Zeller, 1839)

BL: Chão de Couce, 3-IX-2016, Corley and Rosete.

Scrobipalpa obsoletella (Fischer von Röslerstamm, 1841)

BL: Quinta do Canal, 16-IX-2016, Rosete, det. Corley.

** *Caryocolum huebneri* (Haworth, 1828)

TM: Dine, 2-IX-2016, Corley and Gonçalves. Middle latitudes of Europe, north to Sweden and south to Italy and Serbia. [*Stellaria holostea*].

Neotelphusa sequax (Haworth, 1828)

TM: Quinta do Zacarias, 28-VIII-2016, Corley.

Neotelphusa cisti (Stainton, 1869)

TM: Barragem de Azibo, reared from larva on *Cistus salviifolius*, 10-VI-2016, Nunes, det. Corley.

* *Neotelphusa traugotti* (Huemer & Karsholt, 2001)

BL: Lagoa, 17-IX-2016, Nunes, det. Corley (fig. 5). Spain. Larva unknown.

* *Carpatolechchia intermediella* Huemer & Karsholt, 1999

TM: Quinta do Zacarias, 2-VI-2016, Corley. Spain. Larva unknown.

Stenolechia gemmella (Linnaeus, 1758)

BL: Furadouro, 7-IX-2015, Rosete, Jesus, Ferreira and Gonçalves.

ELACHISTIDAE

Elachista nuraghella Amsel, 1951

TM: Covelas, 31-V-2016, Corley.

* *Elachista pollinariella* Zeller, 1839

TM: Carrazedo, 4-VI-2016, Corley; Cidadelhe, 6-VI-2016, Corley. Middle latitudes of Europe north to Denmark and Finland, south to Spain, Italy and Romania, absent from British Isles and Mediterranean islands. [*Festuca*, *Poa*, *Trisetum*, *Brachypodium*].

Elachista chrysodesmella Zeller, 1850

BA: Ponte de Jugais, 26-VIII-2016, Corley.

Elachista pigerella (Herrich-Schäffer, 1854)

Second record. BL: Ansião, 5-VII-2016, Rosete, det. Corley.

Elachista scirpi Stainton, 1887

BL: Ilha da Murraceira, 31-V-2016, Rosete, det. Corley.

Haplochrois ochraceella (Rebel, 1903)

BL: Abiúl, 4-VII-2008, Rosete, det. Corley. The species was published as new for Portugal in CORLEY *et al.* (2016). This is a second, but earlier record.

COLEOPHORIDAE

Coleophora lutarea (Haworth, 1828)

M: Podre, flying over *Stellaria holostea* by day, 29-V-2016, Corley.

Coleophora gryphipennella (Hübner, 1796)

Second record. TM: Carrazedo, 4-VI-2016, Corley.

Coleophora flavipennella (Duponchel, 1843)

TM: Carrazedo, from leafmine on *Quercus pyrenaica*, 24-VI-2016, Nunes, det. Corley.

Coleophora serratella (Linnaeus, 1761)

BL: Madriz, 15-VII-2016, Rosete, det. Corley.

** *Coleophora hemerobiella* (Scopoli, 1763)

TM: França, case on *Crataegus monogyna*, 5-VI-2016, adult reared, Corley. Europe from Britain and Scandinavia to Italy and Greece, Sardinia, Sicily.

Coleophora discordella Zeller, 1849

BL: Quinta do Canal, 16-IX-2016, Rosete, det. Corley.

Coleophora lusitanica Baldizzone & Corley, 2004

TM: Covelas, swept in meadow in afternoon, 31-V-2016, Andrade, det. Corley, in coll. Corley.

Coleophora zelleriella Heinemann, 1854

DL: Valongo, 7-VII-2016, Nunes, det. Corley.

* *Coleophora sisteronica* Toll, 1961

BL: Verride, 31-VII-2009, Rosete, det. Corley. Spain, France, Italy. [*Coronilla minima*].

Coleophora helianthemella Millière, 1870

BL: Buracas de Casnilo, 4-IX-2015, Rosete.

Coleophora vulnerariae Zeller, 1839

TM: Carrazedo, 4-VI-2016, Corley.

Coleophora glaucicolella Wood, 1892

TM: Quinta do Zacarias, 28-VIII-2016, Corley and Gonçalves.

Coleophora maritimella Newman, 1863

BL: Ilha da Murraceira, 31-V-2016, Rosete, det. Corley.

Coleophora galbulipennella Zeller, 1838

TM: França, larval feeding signs on *Silene nutans*, 4-VI-2016, Corley.

Coleophora scabrida Toll, 1959

TM: Quinta do Zacarias, 2-VI-2016, Corley; DL: Mindelo, at black Heath trap, 7-VI-2016, Corley and Mata.

Coleophora vanderwolffi Baldizzone, 1985

TM: Quinta do Zacarias, 2-VI-2016, Corley, det. Baldizzone.

BATRACHEDRIDAE

* *Batrachedra praeangusta* (Haworth, 1828)

TM: Ponte da Carba, under bark of *Populus*, 23-VII-2016, Gonçalves and Pires (fig. 6). Almost all Europe except the Balkan countries and Mediterranean islands. [*Salix* and *Populus*].

SCYTHRIDIDAE

Scythris tributella (Zeller, 1847)

BL: Ansião, 28-V-2016, Corley and Rosete.

Scythris cistorum (Millière, 1876)

DL: Penafiel, 22-VII-2016, Nunes, Silva and Jesus, det. Corley.

Scythris insulella (Staudinger, 1859)

E: Corredoura, 16-VI-2015, Rosete, det. Corley.

* *Scythris lafauryi* Passerin d'Entrèves, 1986

M: Mindelo, 7-VI-2016, Corley. Spain, France. Larva unknown.

Scythris inertella (Zeller, 1855)

ALG: Sapais de Castro Marim, larvae on *Salsola vermiculata* and *Suaeda vera*, 18-III-2016, Corley.

MOMPHIDAE

* *Mompha subbistrigella* (Haworth, 1828)

BL: Ansião, 6-VIII-2016, Rosete, det. Corley. Almost all Europe, but absent from some Balkan countries and from Corsica. [*Epilobium montanum*].

Mompha propinquella (Stainton, 1851)

Second record. TM: Lama Grande, 1-IX-2016, Corley and Gonçalves.

Urodeta hibernella (Staudinger, 1859)

E: Alambre, 19-III-2016, Nunes and Berkemeier.

PTEROLONCHIDAE

Pterolonche albescens Zeller, 1847

BAL: Amendoeira da Serra, 10-IX-2016, Marabuto, Nunes, Silva and Jesus.

ALUCITIDAE

Alucita hexadactyla Linnaeus, 1758

BL: Lourçal, 15-VIII-2016, Rosete, det. Corley.

PTEROPHORIDAE

Agdistis frankeniae (Zeller, 1847)

BL: Ilha da Murraceira, 31-V-2016, Rosete, det. Corley.

Agdistis tamaricis (Zeller, 1847)

BL: Quinta do Canal, 26-VIII-2016, Rosete, det. Corley.

Merrifieldia malacodactylus (Zeller, 1847)

BL: Ansião, 24-VI-2016, Rosete, det. Corley.

EPERMENIIDAE

Ochromolopis staintonellus (Millière, 1869)

BA: Faia Brava, 2-XI-2016, Romão, det. Corley.

TORTRICIDAE

Paramesia gnomana (Clerck, 1759)

BB: Penhas da Saúde, 25-VIII-2016, Corley, Gonçalves and Ferreira.

Avaria hyerana (Millière, 1858)

TM: Balsamão, larva on *Hypericum*, 24-IV-2016, Nunes.

Lozotaeniodes formosana (Frölich, 1830)

BB: Penhas da Saúde, 25-VIII-2016, Corley, Gonçalves and Ferreira.

Eana canescana (Guenée, 1845)

TM: França, 31-VIII-2016, Corley and Gonçalves.

Cnephasia delnoyana Groenen & Schreurs, 2012

TM: Covelas, 31-V-2016, Corley.

* *Cnephasia chrysantheana* (Duponchel, 1843)

TM: Quinta do Zacarias, at black Heath trap, 2-VI-2016, Corley and Mata. Southern Europe, north to France and Czech Republic, absent from most of Balkans and from Corsica. [Larva polyphagous on herbaceous plants].

** *Acleris lorquiniana* (Duponchel, 1835)

BL: Quinta do Canal, 26-VIII-2016, Rosete. Middle latitudes of Europe, north to Sweden and Finland and south to France and Romania. [*Lythrum salicaria*].

* *Acleris cristana* (Denis & Schiffermüller, 1775)

TM: Dine, 2-IX-2016, Corley and Gonçalves (fig. 7). Almost all Europe except Balkan countries and Mediterranean islands. [*Prunus spinosa*, also *Crataegus* and *Malus*].

Acleris rhombana (Denis & Schiffermüller, 1775)

TM: Santuário de Santo Ambrósio, larvae on *Prunus avium* and *Cydonia oblonga*, 23-IV-2016, Nunes.

Acleris hyemana (Haworth, 1811)

TM: Lama Grande, larva on *Erica tetralix*, 15-VIII-2016, Nunes, det. Corley.

Acleris literana (Linnaeus, 1758)

TM: Dine, 2-IX-2016, Corley and Gonçalves.

Aethes francillana (Fabricius, 1794)

TM: Quinta do Zacarias, 28-VIII-2016, Corley and Gonçalves.

Cochylis hybridella (Hübner, 1813)

BA: Ponte de Jugais, 26-VIII-2016, Corley, Gonçalves and Ferreira.

Cochylis atricapitana (Stephens, 1852)

TM: Quinta do Zacarias, 28-VIII-2016, Corley and Gonçalves.

Hedya atropunctana (Zetterstedt, 1839)

BL: Ansião, 6-VIII-2016, Rosete, det. Corley.

** *Lobesia virulenta* Bae & Komai, 1991

BA: Ponte de Jugais, 26-VIII-2016, Corley and Gonçalves. Central Europe north of the Alps, Scandinavia and the Baltic countries. European populations belong to subspecies *mieana* Falck & Karsholt, 1998. The type subspecies occurs in Japan. [*Aegopodium podagraria*. In Japan appears to be polyphagous].

Lobesia porrectana (Zeller, 1847)

BL: Madriz, 15-VII-2016, Rosete, det. Corley.

Acroclita subsequana (Herrich-Schäffer, 1851)

BA: Faia Brava, 2-XI-2016, Romão.

Epinotia tetraquetrana (Haworth, 1811)

M: Podre, 29-V-2016, Corley.

* *Pelochrista fuscilana* (Zeller, 1847)

BL: Serra de Janeanes, 29-IV-2016, Rosete, det. Corley. Southern Europe north to France and Romania, absent from Corsica.

Eucosma conterminana (Guenée, 1845)

E: Praia do Samouco, 11-VI-2015, Rosete, det. Corley.

Eucosma urbana (Kennel, 1901)

DL: Lousada, 7-VIII-2016, R. Cardoso, det. Corley.

Gypsonoma dealbana (Frölich, 1828)

BA: Ponte de Jugais, 26-VIII-2016, Corley.

Gypsonoma aceriana (Duponchel, 1843)

R: Olhos de Água de Alviela, 3-VI-2015, Ferreira, det. Corley.

Notocelia roborana (Denis & Schiffermüller, 1775)

Second record. TM: Guadramil, 13-VIII-2016, Marabuto, Gonçalves, Nunes, Silva and Moreira.

Dichrorampha letarfensis Gibeaux, 1983

DL: Valongo, 22-VI-2016, Nunes, det. Corley.

Strophedra nitidana (Fabricius, 1794)

DL: Valongo, larva on *Quercus robur*, XI-2016, Nunes.

BRACHODIDAE

Brachodes funebris (Feisthamel, 1833)

ALG: Gambelas, 30-VI-2016, Jacinto, det. Corley from photo.

SESIIDAE

Bembecia himmighoffeni (Staudinger, 1866)

TM: Esculca, drowning in swimming pool, 1-VII-2016, Maravalhas, conf. Corley.

Pyropteron leucomelaena (Zeller, 1847)

BL: Serra de Janeanes, 21-VII-2016, Rosete, det. Corley.

PYRALIDAE

Hypsopygia glaucinalis (Linnaeus, 1758)

DL: Lagares, 28-X-2016, Nunes, Silva, Jesus and Lemos.

Aglossa brabantii Ragonot, 1884

TM: Estevais, at black Heath trap, 28-VIII-2016, Corley, Mata and Gonçalves.

* *Polyochodes stipella* Chrétien, 1911

ALG: Ilha da Culatra, 3-VIII-2008, J. P. Cardoso, det. Corley. Spain. [Larva on roots of *Stipa*].

Dioryctria sylvestrella (Ratzeburg, 1840)

DL: Valongo, 1-VII-2016, Nunes, det. Corley.

Epischnia prodromella (Hübner, 1799)

TM: Carrazedo, netted at sunset, 4-VI-2016, Corley.

Epischnia asteris Staudinger, 1870

E: Praia do Samouco, 29-X-2016, Rosete.

Ceutholopha isidis (Zeller, 1867)

Third record. ALG: Boliqeime, 27-VIII-2010, Dale.

Moitrelia hispanella (Staudinger, 1859)

TM: Barragem de Azibo, reared from larva on *Thymus*, 1-VI-2016, Nunes, det. Corley.

Pseudacrobasis tergestella (Ragonot, 1901)

BA: Ponte de Jugais, 26-VIII-2016, Corley and Gonçalves.

Acrobasis bithynella Zeller, 1848

BB: Penhas da Saúde, 25-VIII-2016, Corley, Gonçalves and Ferreira.

Acrobasis fallouella (Ragonot, 1871)

TM: Estevais, 29-VIII-2016, Corley.

Phycitodes inquinatella (Ragonot, 1887)

ALG: Boliqeime, 20-VIII-2010, Dale.

Phycitodes saxicola (Vaughan, 1870)

BA: Ponte de Jugais, 26-VIII-2016, Corley.

Phycitodes albatella (Ragonot, 1887)

TM: Dine, 2-IX-2016, Corley and Gonçalves.

Ephestia disparella Hampson, 1901

DL: Penafiel, 21-VIII-2016, Nunes and Silva, det. Corley.

CRAMBIDAE

Pleuroptya crocealis (Duponchel, 1834)

BA: Ponte de Jugais, 26-VIII-2016, Corley, Gonçalves and Ferreira.

Agrotera nemoralis (Scopoli, 1763)

BA: Ponte de Jugais, 26-VIII-2016, Corley, Gonçalves and Ferreira.

Metasia ibericalis Ragonot, 1894

BL: Pampilhosa de Botão, 7-VII-2016, Jesus, det. Marabuto.

Metasia cuencalis Ragonot, 1894

BA: Ponte de Jugais, 26-VIII-2016, Corley, Gonçalves and Ferreira.

* *Cydalima perspectalis* (Walker, 1859)

M: São Vicente de Penso, 22-VIII-2016, Gomes, det. Marabuto from photo; Quinta da Estrelinha, 23-VIII-2016, Mata, van Boven and Marques, det. Corley from photo; Ponte de Barca, 30-X-2016, Marabuto. An East Asian species which appeared in Germany in 2006 and has spread rapidly in Europe with records from Belgium, Netherlands, France, England, Denmark, Switzerland, Italy, Austria, Czech Republic, Slovakia, Slovenia, Hungary, Croatia, Romania and Russia; first recorded in Spain (Pontevedra) in 2014 (PÉREZ-OTERO *et al.*, 2014). [*Buxus sempervirens*].

Herpetogramma licarsisalis (Walker, 1859)

TM: Dine, 2-IX-2016, Corley and Gonçalves.

* *Chilo suppressalis* Bleszyński, 1965

BL: Quinta do Canal, 23-IX-2016, Rosete, det. Corley. Spain, France, Hungary, Corsica. [*Oryza*, *Zea*, *Saccharum*].

Eurrhysis pollinalis (Denis & Schiffermüller, 1775)

TM: Quinta do Zacarias, 2-VI-2016, Corley.

Eurrhysis gutturalis (Herrich-Schäffer, 1848)

BL: Mata do Urso, 26-IV-2016, Rosete.

Mesocrambus tamsi Bleszyński, 1960

BL: Madriz, 15-VII-2016, Rosete, det. Corley.

GEOMETRIDAE

Idaea belemiata (Millière, 1868)

DL: Lagares, 22-VII-2016, Nunes and Silva.

Idaea longaria (Herrich-Schäffer, 1852)

DL: Mindelo, 7-VI-2016, Corley.

Idaea nexata (Hübner, 1813)

BL: Mata do Urso, 31-III-2016, Rosete.

* *Lythria purpuraria* (Linnaeus, 1758)

TM: Estevais, 29-VIII-2016, Corley and Gonçalves; Rio Maça, 30-VIII-2016, Corley and Gonçalves. Earlier records of *L. purpuraria* such as that of Mendes (1903) refer to *L. sanguinaria* (Duponchel, 1842). Middle and southern Europe, absent from British Isles, Belgium, Netherlands, Scandinavia and most Mediterranean islands. [*Polygonum aviculare*].

Scotopteryx coelinaria (Graslin, 1863)

BB: Penhas da Saúde, 25-VIII-2016, Corley, Gonçalves and Ferreira.

Operophtera brumata (Linnaeus, 1758)

DL: Couce, larva on *Salix*, 4-IV-2016, Nunes.

* *Philereme transversata* (Hufnagel, 1767)

TM: Estevais, 1-VI-2016, at black Heath trap, Corley and Mata. Almost all Europe, absent from Norway and Mediterranean islands. [*Rhamnus*, *Frangula*].

Eupithecia extraversaria Herrich-Schäffer, 1852

DL: Árvore, 7-VIII-2016, Jesus.

Macaria notata (Linnaeus, 1758)

BL: Chão de Couce 3-IX-2016, Corley and Rosete.

Chiasmia aestimaria (Hübner, 1809)

BL: Ilha da Murraceira, 31-V-2016, Rosete.

Colotois pennaria (Linnaeus, 1761)

ALG: Sargaçal, 19-XII-2016, Valadares.

Paradarisa consonaria (Hübner, 1799)

BL: Moura da Serra, 15-V-2016, Rosete.

Phaiogramma faustinata (Millière, 1868)

BL: Chão de Couce 3-IX-2016, Corley and Rosete.

NOTODONTIDAE

Stauropus fagi (Linnaeus, 1758)

TM: Estevais, 2-VI-2016, Corley.

EREBIDAE

Zebeeba falsalis (Herrich-Schäffer, 1839)

TM: Estevais, at black Heath trap, 1-VI-2016, Corley and Mata.

Orgyia antiqua (Linnaeus, 1758)

TM: Ponte da Carba, 23-VII-2016, Pires, Gonçalves, Jesus and Silva.

Mitochrista miniata (Forster, 1771)

BA: Ponte de Jugais, 26-VIII-2016, Corley, Gonçalves and Ferreira.

Odice blandula (Rambur, 1858)

TM: Estevais, 29-VIII-2016, Corley.

NOCTUIDAE

Pseudozarba bipartita (Herrich-Schäffer, 1850)

TM: Estevais, 1-VI-2016, Corley.

Acontia lucida (Hufnagel, 1766)

BL: Furadouro, 27-VII-2016, Jesus and Ferreira.

Moma alpium (Osbeck, 1788)

BA: Ponte de Jugais, 26-VIII-2016, Corley, Gonçalves and Ferreira.

Calophasia almoravida Graslin, 1863

TM: Cidadelhe, 6-VI-2016, Corley.

Stilbia anomala (Haworth, 1812)

BB: Penhas da Saúde, 25-VIII-2016, Corley, Gonçalves and Ferreira.

Amephana aurita (Fabricius, 1787)

BL: Poço, 7-VI-2016, Rosete.

* *Hoplodrina blanda* (Denis & Schiffermüller, 1775)

BA: Malhada Tramazeira, 27-VIII-2016, Corley and Nunes. Almost all European countries. [Larva polyphagous on herbaceous plants including grasses].

Spudaea ruticilla (Esper, 1791)

DL: Parque Biológico de Gaia, 12-III-2016, Nunes and Silva.

Conistra rubiginea (Denis & Schiffermüller, 1775)

DL: Lagares, 8-IV-2016, Nunes, Silva and Jesus.

Cosmia trapezina (Linnaeus, 1758)

BL: Ansião, 24-VI-2016, Rosete.

Ammopolia witzenmanni (Standfuss, 1890)

BA: Faia Brava, 2-XI-2016, Romão.

Trigonophora haasi (Staudinger, 1892)

BB: Penhas da Saúde, 25-VIII-2016, Corley, Gonçalves and Ferreira.

Orthosia incerta (Hufnagel, 1766)

DL: Parque Biológico de Gaia, 12-III-2016, Nunes and Silva.

Egira conspicillaris (Linnaeus, 1758)

BL: Moura da Serra, 15-V-2016, Rosete.

Dichagyris constanti (Millière, 1860)

Fourth record. TM: Estevais, 29-VIII-2016, Corley and Gonçalves.

Paucgraphia erythrina (Herrich-Schäffer, 1852)

BB: Penhas da Saúde, 25-VIII-2016, Corley, Gonçalves and Ferreira.

* *Xestia stigmatica* (Hübner, 1813)

TM: Salgueiros, 18-VIII-2012, Marabuto and Magalhães; Dine, 2-IX-2016, Corley and Gonçalves (fig. 8). Almost all Europe, absent from Netherlands, Finland and Mediterranean islands. [Larva probably polyphagous on herbaceous plants].

Recent Literature

BALDIZZONE (2016) reveals that *Coleophora murciana* Toll, 1960 is the previously unknown male of *C. perplexella* Toll, 1960. The two species are therefore synonymised, with *C. perplexella* treated as the senior name. Both have been recorded from Portugal (CARVALHO & CORLEY, 1995; CORLEY, 2015).

CORLEY *et al.* (2016) add 39 species to the Portuguese fauna and delete one.

GASTÓN *et al.* (2016) show that *Hypsotropa vulneratella* (Zeller, 1848) described from Sicily, is not present in the Iberian Peninsula, where it is replaced by a new species (*H. vazquezi* Gastón, Macià, Ylla & Huertas, 2016). In Portugal, the genus has been recorded only from Algarve. No Portuguese specimens were examined by GASTÓN *et al.* (2016), but they are considered to belong to the new species due to the proximity to populations in Huelva, Spain.

SKOU *et al.* (2016) revise the genus *Ekboarmia*, and describe a new species *E. miniaria* Skou, Stüning & Sihvonen from Baixo Alentejo, Portugal.

TABELL & WIKSTRÖM (2016) add *Coleophora proterella* Wikström & Tabell, 2016 to the Portuguese list. The record replaces that for *C. virgaureae* (CORLEY *et al.*, 2012; CORLEY, 2015) which was misidentified.

VAN NIEUKERKEN *et al.* (2016) provide a new global classification and catalogue of Nepticuloidea. This includes recognition of *Glaucolepis* Braun, 1917 as a genus separate from *Trifurcula*, and *Fomoria* Beirne, 1945 and *Zimmermannia* M. Hering, 1940 as genera separate from *Ectoedemia*. The genus *Acalyptis* is placed after *Parafomoria*. No subfamilies are recognised within either Nepticulidae or Opostegidae. New combinations for Portuguese species are given in the Appendix below.

Appendix: Changes to the Portuguese fauna list

Species added to the Portuguese fauna listed in this and other papers are summarised here, each with a number indicating their placement in the checklist (CORLEY, 2015). New genera for the Portuguese fauna show the author and year of publication of the genus.

Name changes due to changes at genus level or to new synonymy are given, with each species retaining its list number. In a case where a new name is provided for a previously misidentified species, the new species retains the number of the misidentified species. Thus *Hypsotropa vazquezi* Gastón, Macià, Ylla & Huertas, 2016 replaces *Hypsotropa vulneratella* (Zeller, 1848) which GASTÓN *et al.* (2016) show to be absent from the Iberian Peninsular, but the new species retains the number 1440 in the checklist.

The opportunity is also taken to correct some minor errors in CORLEY (2015).

0025.2 *Stigmella stettinensis* (Heinemann, 1971)

The following six species removed from *Ectoedemia*:

Glaucolepis Braun, 1917

0045 *Glaucolepis thymi* (Szöcs, 1965)

0046 *Glaucolepis corleyi* (Laštůvka & Laštůvka, 2007)

0047 *Glaucolepis stoechadella* (Klimesch, 1975)

0048 *Glaucolepis rosmarinella* (Chrétien, 1914)

0049 *Glaucolepis bupleurella* (Chrétien, 1914)

0050 *Glaucolepis chretieni* (Laštůvka, Laštůvka & Van Nieuwerkerken, 2007)

Bohemannia Stainton, 1859

0063.1 *quadrimaculella* (Boheman, 1853)

The following six species removed from *Ectoedemia*:

Fomoria Beirne, 1945

- 0064 *Fomoria septembrella* (Stainton, 1849)
Zimmermannia M. Hering, 1940
- 0065 *Zimmermannia atrifrontella* (Stainton, 1851)
- 0066 *Zimmermannia liebwerdella* (Zimmermann, 1940)
- 0067 *Zimmermannia longicaudella* (Klimesch, 1953)
- 0068 *Zimmermannia hispanica* (Van Nieuwerkerken, 1985)
- 0069 *Zimmermannia liguricella* (Klimesch, 1953)
Eumasia Chrétien, 1904 (*Pygmaeotinea* Amsel, 1957)
- 0148 *Eumasia crisostomella* (Amsel, 1957)
Gaedikeia Sutter, 1998
- 0170.1 *kokkariensis* Sutter, 1998
- 0190.1 *Tinea columbariella* Wocke, 1877
- 0214.1 *Bucculatrix diffusella* Menhofer, 1943
- 0233.1 *Aspilapteryx inquinata* Triberti, 1985
- 0348.1 *Argyresthia bonnetella* (Linnaeus, 1758)
- 0495.1 *Cosmopterix zieglerella* (Hübner, 1810)
- 0521.2 *Syncopacma albipalpella* (Herrich-Schäffer, 1854)
- 0545.2 *Dichomeris marginella* (Fabricius, 1781)
- 0598.1 *Metzneria littorella* (Douglas, 1850)
Psamathocrita Meyrick, 1925
- 0611.1 *dalmatinella* Huemer & Tokár, 2000
- 0624 *Ornativulva pseudotamariciella* Sattler, 1967 (*tamariciella* auct. nec Zeller, 1850). Correction of misspelling.
- 0692.1 *Caryocolum huebneri* (Haworth, 1828)
- 0698.1 *Neotelphusa traugotti* (Huemer & Karsholt, 2001)
- 0702.1 *Carpatolechia intermediella* Huemer & Karsholt, 1999
- 0718.1 *Elachista pollinariella* Zeller, 1839
Elachista occidentella is a synonym of *E. hispanica*, therefore number 0720 disappears.
- 0721 *Elachista hispanica* Traugott-Olsen, 1992 (*occidentella* Traugott-Olsen, 1992).
- 0771.2 *Coleophora hemerobiella* (Scopoli, 1763)
- 0775 *Coleophora murciana* is male of *C. perplexella*, therefore number 0775 disappears.
- 0776 *Coleophora perplexella* Toll, 1960 (*murciana* Toll, 1960)
- 0784.1 *Coleophora sisteronica* Toll, 1961
- 0832 *Coleophora proterella* Wikström & Tabell, 2016 (*virgaureae* auct. nec Stainton, 1857).
- 0866.1 *Batrachedra praeangusta* (Haworth, 1828)
- 0886.1 *Scythris lafauryi* Passerin d'Entrèves, 1986
- 0905.1 *Mompha subbistrigella* (Haworth, 1828)
- 1026.1 *Cnephasia chrysantheana* (Duponchel, 1843)
- 1037.1 *Acleris lorquiniana* (Duponchel, 1835)
- 1037.2 *Acleris cristana* (Denis & Schiffermüller, 1775)
- 1106.1 *Lobesia virulenta* Bae & Komai, 1991
- 1147.1 *Pelochrista fuscilana* (Zeller, 1847)
- 1440 *Hypsotropa vazquezi* Gastón, Macià, Ylla & Huertas, 2016 (*vulneratella* auct. nec Zeller, 1848).
Polychodes Chrétien, 1911
- 1441.1 *stipella* Chrétien, 1911
- 1584 *Pleuroptya crocealis* (Duponchel, 1834). Missing brackets added.
Cydalima Lederer, 1863
- 1603.1 *perspectalis* (Walker, 1859)
- 1642.1 *Chilo suppressalis* Błeszyński, 1965
- 1714 *Psilogaster loti* (Ochsenheimer, 1810). Missing brackets added.

- 1831.1 *Lythria purpuraria* (Linnaeus, 1758)
Tribe Phileremini
Philereme Hübner, 1825
- 1882.2 *transversata* (Hufnagel, 1767)
- 2015.1 *Ekboarmia miniaria* Skou, Stüning & Sihvonen, 2016
- 2316.1 *Hoplodrina blanda* (Denis & Schiffermüller, 1775)
Fissipunctia Beck, 1991 (*Apterogenum* Berio, 2002)
- 2419 *ypsillon* (Denis & Schiffermüller, 1775)
- 2562.1 *Xestia stigmatica* (Hübner, 1813)

Acknowledgements

We thank all those who have allowed us to include their records, Giorgio Baldizzone for identification of *Coleophora vanderwolffi*, Zdenko Tokár who identified *Bucculatrix diffusella* and provided additional information on this species, Mike Dale for the photo of *Metzneria littorella*, Ernestino Maravalhas for preparing the map and Eduardo Marabuto for valued comments on the manuscript. MFVC particularly thanks Sónia Ferreira for arrangements and assistance with fieldwork. FCT funded Vanessa Mata (PD/BD/113462/2015).

BIBLIOGRAPHY

- BALDIZZONE, G., 2016.– On the identity of *Coleophora perplexella* Toll, 1960 and *C. murciana* Toll, 1960. Contributions to the knowledge of Coleophoridae. CXXXIII (Lepidoptera: Coleophoridae).– *SHILAP Revista de lepidopterología*, **44**(173): 149-156.
- CARVALHO, J. PASSOS DE & CORLEY, M. F. V., 1995.– Additions to the Lepidoptera of Algarve, Portugal.– *SHILAP Revista de lepidopterología*, **23**(91): 191-230.
- CASTROVIEJO, S., 1986-2015.– *Flora Iberica*: **1**: 575 pp., **2**: 897 pp., **3**: 730 pp., **4**: 730 pp., **5**: 320 pp., **6**: 592 pp., **7**: 1119 pp., **8**: 375 pp., **9**: 564 pp., **10**: 498 pp., **11**: 672 pp., **12**: 650 pp., **13**: 677 pp., **14**: 251 pp., **15**: 449 pp., **16**: 734 pp., **17**: 298 pp., **18**: 420 pp., **20**: 651 pp., **21**: 366 pp. Real Jardín Botánico, Madrid.
- CORLEY, M. F. V., 2015.– *Lepidoptera of Continental Portugal. A fully revised list*. 288 pp. Martin Corley, Faringdon.
- CORLEY, M. F. V., MERCKX, T., CARDOSO, J. P., DALE, M. J., MARABUTO, E., MARAVALHAS, E. & PIRES, P., 2012.– New and interesting Portuguese Lepidoptera records from 2011. (Insecta: Lepidoptera).– *SHILAP Revista de lepidopterología*, **40**(160): 489-511.
- CORLEY, M. F. V., ROSETE, J., GONÇALVES, A.R., NUNES, J., PIRES, P. & MARABUTO, E. 2016.– New and interesting Portuguese Lepidoptera records from 2015 (Insecta: Lepidoptera).– *SHILAP Revista de lepidopterología*, **44**(176): 615-643.
- GASTÓN, F. J., MACIÀ, R., YLLA, J. & HUERTAS-DIONISIO, M., 2016.– El género *Hypsotropa* Zeller, 1848 en la Península Ibérica, con la descripción de una especie nueva (Lepidoptera: Pyralidae, Phycitinae, Peoriini).– *Boletín de la Sociedad Entomológica Aragonesa*, **58**: 75-88.
- MENDES, C. DE AZEVEDO, 1903.– Lepidopteros de Portugal. II. Lepidopteros da região de S. Fiel (Beira Baixa).– *Brotéria*, **2**: 41-80.
- PÉREZ-OTERO, R., MANSILLA, J. P. & VIDAL, M., 2014.– *Cydalima perspectalis* (Walker, 1859) (Lepidoptera, Crambidae): una nueva amenaza para *Buxus* spp. en la Península Ibérica.– *Arquivos entomológicos*, **10**: 225-228.
- SKOU, P., STÜNING, D. & SIHVONEN, P. 2016.– Revision of the West-Mediterranean geometrid genus *Ekboarmia*, with description of a new species from Portugal (Lepidoptera, Geometridae, Ennominae).– *Nota lepidopterologica*, **40**: 39-63.
- TABELL, J. & WIKSTRÖM, B., 2016.– *Coleophora proterella* Wikström & Tabell, a new species belonging to *C. virgaureae* species-complex (Lepidoptera: Coleophoridae).– *SHILAP Revista de lepidopterología*, **44**(173): 169-174.
- TUTIN, T. G., HEYWOOD, V. H., BURGESS, N. A., MOORE, D. M., VALENTINE, D. H., WALTERS, S. M. &

- TUTIN, T. G., HEYWOOD, V. H., BURGESS, N. A., MOORE, D. M., VALENTINE, D. H., WALTERS, S. M. & WEBB, D. A., 1964-1980.– *Flora Europaea*, **1**: xxxii + 464 pp., **2**: xxvii + 455 pp., **3**: xxix + 370 pp., **4**: xxix + 505 pp., **5**: xxxvi + 452 pp. Cambridge University Press, Cambridge.
- VAN NIEUKERKEN, E. J., DOORENWEERD, C., HOARE, R. & DAVIS, D. R., 2016.– Revised classification and catalogue of global Nepticulidae and Opostegidae (Lepidoptera, Nepticuloidea).– *ZooKeys*, **628**: 65-246.

*M. F. V. C.

Pucketty Farm Cottage

Faringdon

GB-Oxfordshire SN7 8JP

GRAN BRETAÑA/ GREAT BRITAIN

E-mail: martin.corley@btinternet.com

<https://orcid.org/0000-0003-4240-8007>

y / and

CIBIO

Centro de Investigação em Biodiversidade e Recursos Genéticos

Universidade do Porto

Campus Agrário de Vairão

P-4485-661 Vairão

PORTUGAL / PORTUGAL

J. R.

Urbanização Lourisol,

Rua Manuel Cerqueira Nobrega, Lote 16, 2 frente

P-3105-165 Louriçal, Pombal

PORTUGAL / PORTUGAL

E-mail: roseteprof@gmail.com

<https://orcid.org/0000-0002-5460-9255>

A. R. G.

Computational Biology and Population Genomics Group

Universidade de Lisboa

Faculdade de Ciências de Lisboa

Edifício C2, sala 2.3.22

Campo Grande

P-1749-016 Lisboa

PORTUGAL / PORTUGAL

E-mail: anagoncalvesm@gmail.com

<https://orcid.org/0000-0003-1776-3728>

J. N.

Rua Padre Miguel Paupério do Vale, 401

P-4440-687 Valongo

PORTUGAL / PORTUGAL

E-mail: joaomiguelfn@sapo.pt

<https://orcid.org/0000-0002-9146-6089>

V. M.
CIBIO
Centro de Investigação em Biodiversidade e Recursos Genéticos
Universidade do Porto
Campus Agrário de Vairão
P-4485-661 Vairão
PORTUGAL / *PORTUGAL*
E-mail: matavca@gmail.com
<https://orcid.org/0000-0003-3005-9030>

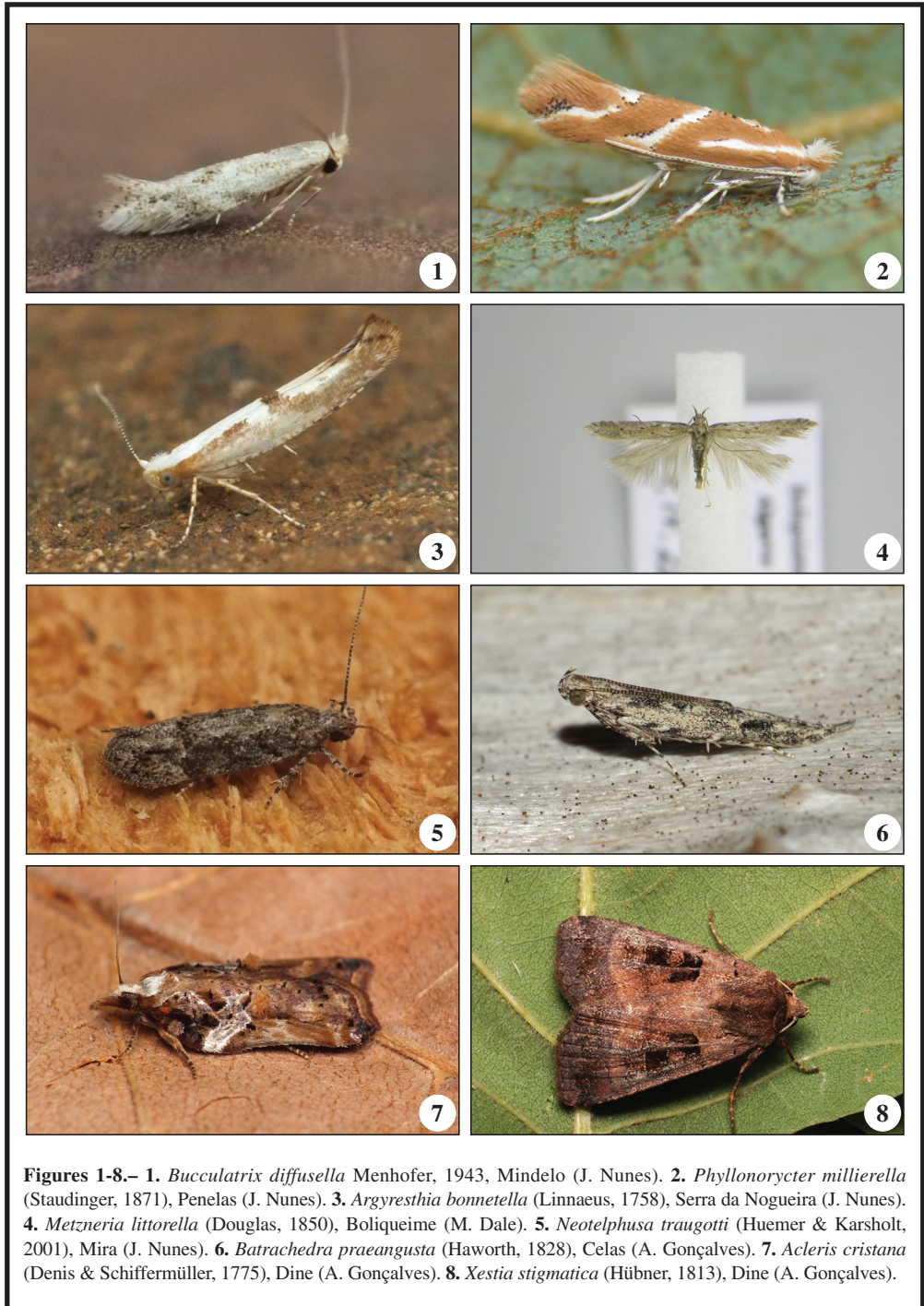
P. P.
28 Trafalgar Road
GB-Southampton SO15 3ED
GRAN BRETAÑA / *GREAT BRITAIN*
E-mail: pedromspires@gmail.com
<https://orcid.org/0000-0001-4540-6085>

*Autor para la correspondencia / *Corresponding author*

(Recibido para publicación / *Received for publication* 6-X-2017)

(Revisado y aceptado / *Revised and accepted* 9-XI-2017)

(Publicado / *Published* 30-III-2018)



Figures 1-8.– **1.** *Bucculatrix diffusella* Menhofer, 1943, Mindelo (J. Nunes). **2.** *Phyllonorycter millierella* (Staudinger, 1871), Penelas (J. Nunes). **3.** *Argyresthia bonnetella* (Linnaeus, 1758), Serra da Nogueira (J. Nunes). **4.** *Metzneria littorella* (Douglas, 1850), Boliqeime (M. Dale). **5.** *Neotelphusa traugotti* (Huemer & Karsholt, 2001), Mira (J. Nunes). **6.** *Batrachedra praeangusta* (Haworth, 1828), Celas (A. Gonçalves). **7.** *Acleris cristana* (Denis & Schiffermüller, 1775), Dine (A. Gonçalves). **8.** *Xestia stigmatica* (Hübner, 1813), Dine (A. Gonçalves).