

A new species of *Crypsiptya* Meyrick, 1894 from China (Lepidoptera: Crambidae)

L. L. Jie & W. C. Li

Abstract

Crypsiptya spinosa Jie & Li, sp. n. is described from Jiangxi Province, China. The new species can be diagnosed by three tufts of scales on the ventral base of forewing, and in male genitalia the valva with a long sella, and phallus has two clusters of long spine-like cornuti. The images of the head, habitus, tympanal organs, and male genitalia are provided.

KEY WORDS: Lepidoptera, Crambidae, *Crypsiptya*, new species, China.

Una nueva especie de *Crypsiptya* Meyrick, 1894 de China (Lepidoptera: Crambidae)

Resumen

Crypsiptya spinosa Jie & Li, sp. n., se describe de la provincia China de Jiangxi. La nueva especie puede diagnosticarse por tres plumeros de pelos escamiformes en la base ventral de las alas anteriores y la valva con un largo sella, phallus con dos grupos de cornuti espino-dorsales en la genitalia del macho. Se proporcionan imágenes de la cabeza, habitus, órgano timpánico y genitalia del macho.

PALABRAS CLAVE: Lepidoptera, Crambidae, *Crypsiptya*, nueva especie, China.

Introduction

The genus *Crypsiptya* was erected by Meyrick in 1894 for *Botys nereidalis* Lederer, 1863. MEYRICK (1894) recognized at that time only one species. It can be recognized by the special tufts of scales on the ventral base of the forewing, and in the male genitalia the editum has peculiar setae arranged in a line and a prominent, sclerotized sella. To date, the genus has eight species worldwide (HAMPSON, 1913; ROSE & PAJANI, 1979; MAES, 2002, 2014). Prior to this study, only a single species, *C. coclesalis* (Walker, 1859), was recorded in China (MAES, 2002). In the present paper, we add a new species to the genus from China. All the specimens are deposited in the Insect Museum, Jiangxi Agricultural University, Nanchang, China (JXAUM).

Crypsiptya spinosa Jie & Li, sp. n. (Figs. 1-5)

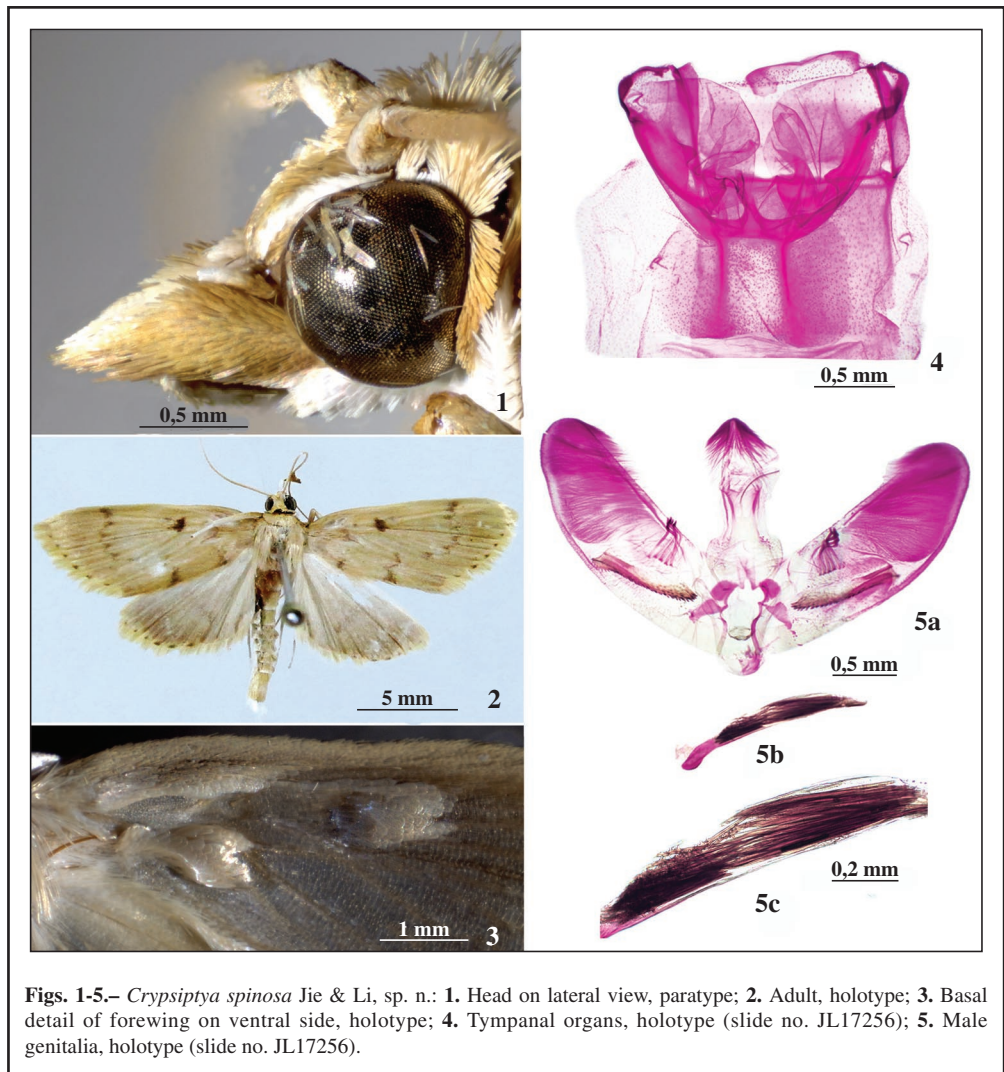
Material examined: Holotype ♂, CHINA, Jiangxi Province: Tongboshan [28°15'N, 117°07'E], 700 m, 28-IV-2012, Weichun Li, genitalia slide no. JL18030. Paratypes, 2 ♂♂, same data as holotype; 1 ♂, CHINA, Jiangxi Province: Fuliang, Huangzihao [29°15'N, 117°09'E], 220 m, 26-V-2012, Weichun Li, genitalia slide no. JL17256.

Description: Adult (Figs. 1-3): Forewing length 10.0-11.0 mm. Frons rounded, ochereous with two lateral white streaks. Vertex ochereous. Labial palpus porrect, ochereous except basally white. Maxillary palpus slightly upright, basal half ochereous, distal half white. Antenna scape dorsally white, ventrally pale brown; flagellomere pale brown. Thorax pale brown. Forewing ochereous, apex obtuse; ventral base with three tufts of scales; antemedian line pale brown, not well-developed; distal discoidal stigma

ovate, blackish brown; postmedian line brown, wave-shaped, meeting costa and dorsum perpendicularly, convex at costal one-third, concave at dorsal one-third; termen pale yellow with six black marginal spots; cilia yellow. Hindwing grayish brown; postmedian line pale brown; termen with six black marginal spots; cilia yellow. Abdomen pale brown.

Tympanal organs (Fig. 4): Bulla tympani convex on inner margin, concave at base. Pons tympani divided into two small branches at base. Saccus tympani extending to about one-third of second tergite. Venula secunda nearly straight.

Male genitalia (Fig. 5): Uncus nearly triangular, densely covered with setae. Valva with same width at basal two-thirds, distal one-third gently narrowed towards round apex; editum consist of five peculiar flattened, terminally forked setae; sella well-developed and strongly sclerotized, ventrally serrated, reaching middle of ventral margin of valva. Saccus a semicircle. Juxta nearly ovate. Phallus thin and long, about half as long as valva, equipped with two clusters of long spine like cornuti.



Figs. 1-5.— *Crypsityta spinosa* Jie & Li, sp. n.: **1.** Head on lateral view, paratype; **2.** Adult, holotype; **3.** Basal detail of forewing on ventral side, holotype; **4.** Tympanal organs, holotype (slide no. JL17256); **5.** Male genitalia, holotype (slide no. JL17256).

Female: Unknown.

Distribution: China (Jiangxi).

Diagnosis: This species can be distinguished from its congeners by the unique characters: the ventral base of forewing has three tufts of scales; the valva with a thin and long sella reaching the ventral part of the valva, and the cornuti consisting of two clusters of long spines in the male genitalia.

Etymology: The specific name is derived from the Latin *spinus* = spinous, in reference to the spine shaped cornuti in the male genitalia.

Acknowledgments

We give our cordial thanks to the reviewers for their critical reading of the manuscript and helpful comments. Special thanks are given to Dr. Antonio Vives for providing the Spanish translation in this work. The research is supported by the National Natural Science Foundation of China (No. 31601885).

BIBLIOGRAPHY

- HAMPSON, G. F., 1913.– Descriptions of new species of Pyralidae of the subfamily Pyraustinae.– *Annals and Magazine of Natural History, including Zoology, Botany and Geology*, (ser. 8) **11**(63): 322-342.
- MAES, K. V. N., 2002.– The genus *Crypsiptya* in Africa with the description of a new species and a world checklist of the genus (Lepidoptera Pyraloidea Crambidae Pyraustinae).– *Belgian Journal of Entomology*, **4**(1): 27-32.
- MAES, K. V. N., 2014.– Notes on the Crambidae of Africa with new synonyms and combinations (Lepidoptera, Pyraloidea, Crambidae).– *Lambillionea*, **114**(2): 139-143.
- MEYRICK, E., 1894.– On Pyralidina from the Malay Archipelago.– *Transactions of the Entomological Society of London*, **1894**: 455-480.
- ROSE, H. S. & PAJANI, H. R., 1979.– The taxonomic position of three North-West Indian species commonly referred to the genus *Pyrausta* Schrank (Lepidoptera: Pyralidae).– *Journal of the New York Entomological Society*, **87**(1): 2-8.

L. L. J.
College of Agronomy
Jiangxi Agricultural University
Nanchang 330045
R. P. CHINA / P. R. CHINA
E-mail: jielulan@163.com
<https://orcid.org/0000-0003-1976-4126>

*W. C. L.
College of Agronomy
Jiangxi Agricultural University
Nanchang 330045
R. P. CHINA / P. R. CHINA
E-mail: weichunlee@126.com
<https://orcid.org/0000-0003-1411-6533>

*Autor para la correspondencia / *Corresponding author*

(Recibido para publicación / *Received for publication* 11-III-2019)

(Revisado y aceptado / *Revised and accepted* 15-IV-2019)

(Publicado / *Published* 30-XII-2019)